

# RESIDENT'S GUIDE



Cambridge City Hall  
300 3rd Ave NE  
Cambridge, MN 55008

**CAMBRIDGE**   
Minnesota's Opportunity Community®

Revision Date: Feb 2023



## **Welcome to the City of Cambridge, the City on the Rum River, and Minnesota's Opportunity Community!**

Cambridge was given its name by settlers from New England, although it was a haven for Swedish immigrants. These immigrants brought a strong work ethic, rich heritage and made healthy lives for their families in the Rum River Valley.

Cambridge was established in 1866, and by the early 1900's boasted many first-class business facilities, making it a very desirable community. The population grew rapidly and continues to grow. Cambridge currently has around 9,600 residents.

Cambridge offers a thriving downtown, state of the art City parks, the Rum River, and a Performing Arts Center. It's also the County Seat, making us a hub for activity in government offices, a community college, and a full service, specialty hospital serving more than 40,000 area residents.

Our industrial parks house several large corporations, providing ample job opportunities and a new industrial park offering tax credit incentives to new businesses, all of which make Cambridge an enticing location even 100 years later.

## WHAT'S INSIDE

Introduction.....	1
Table of Contents.....	2
City Council.....	3
City Council Meetings.....	3
Commissions & Boards.....	5
Community Development.....	6
Economic Development.....	7
Public Safety.....	9
Public Transportation.....	10
Emergency Notifications.....	10
Resources & Businesses.....	11
School District.....	12
Senior Living.....	13
Senior Enrichment.....	14
Parks.....	15
Utilities & Garbage.....	18
Northbound Liquor.....	19
Driver and Vehicle Services.....	21
Cambridge Public Library.....	21
Helpful Websites.....	21
Summer Parks Programming.....	22
Quick Reference Guide.....	23

**Check out our Summer Programming!**  
**Kids events, movies in the park, concerts in the park,**  
**and Discover Downtown events.**  
**More information online!**

# CAMBRIDGE CITY COUNCIL

Cambridge City Council is comprised of one Mayor and four City Council members. The Council oversees government operation and approves the annual budget. They oversee the long-term needs of a growing community.



**Jim Godfrey**  
Mayor  
763.552.3220  
[jimtrina@midco.net](mailto:jimtrina@midco.net)  
First appointment: 2019  
4 year terms

“Cambridge is known for having a small town feel while growing to serve the times. Together with the council, we set a goal to use growth to reduce the city tax rate to the 50th percentile by 2027, steadily lowering tax rates for every property. We will achieve this yet still retain community safety and excellent government services. As Mayor, I encouraged many civic groups to accomplish some amazing initiatives. Thanks to this teamwork, you can enjoy the added amenities at Sandquist Park and Parkwood Park, the new Cambridge Public Library, our new Veterans Memorial Park, the pickle ball courts and so much more.”

– *Jim Godfrey, 2022*

## COUNCIL MEETINGS

City Council meetings are every first Monday of each month at 6:00 pm. Special meetings and work sessions are called as needed to conduct City business. A minimum of three days’ notice will be given to the public before a special meeting. Follow us on Facebook for events or visit our event calendar [www.ci.cambridge.mn.us/calendar](http://www.ci.cambridge.mn.us/calendar)

City Council members are elected at-large to four-year terms. Office terms are staggered, which means elections are held every two years in even years. Municipal elections are non-partisan and ballots are without party designation.



**Bob Shogren**  
Council Member  
763.245.6715  
[bobshogren@gmail.com](mailto:bobshogren@gmail.com)  
Term Expires: 2027



**Aaron Berg**  
Council Member  
701.429.7433  
[aberg@ci.cambridge.mn.us](mailto:aberg@ci.cambridge.mn.us)  
Term Expires: 2027



**Lisa Iverson**  
Council Member  
763.689.5399  
[lisaanniverson@aol.com](mailto:lisaanniverson@aol.com)  
Term Expires: 2025



**Mark Ziebarth**  
Council Member  
763.689.5735  
[mziebarthcitycouncil@gmail.com](mailto:mziebarthcitycouncil@gmail.com)  
Term Expires: 2025

# COMMISSIONS & BOARDS

## **PLANNING COMMISSION**

The Planning Commission is in charge of advising City Council on land use policies, laws and recommendations for development, and use permits. Meets on the first Tuesday of the month, 7:00 PM at City Hall located at 300 3rd Ave NE, Cambridge, MN 55008.

## **PARKS, TRAILS & RECREATION COMMISSION**

Parks and Recreation work together to enrich the quality of life for the residents of Cambridge through recreational opportunities. Meets on the second Monday of the month, 7:00 PM at City Hall located at 300 3rd Ave NE, Cambridge, MN 55008.

## **CAMBRIDGE MUNICIPAL AIRPORT ADVISORY BOARD**

The Airport Advisory Board is responsible for developing plans, promoting public interest, consulting with Federal and State authorities, and much more. Meets quarterly, as needed, 7:00 PM at City Hall located at 300 3rd Ave NE, Cambridge, MN 55008.

## **ECONOMIC DEVELOPMENT AUTHORITY**

The EDA is comprised of the Cambridge City Council. The EDA's mission is to promote our three industrial parks to current and prospective companies and to administer the housing program. Meets on the third Monday of the month, 5:45 PM at City Hall located at 300 3rd Ave NE, Cambridge, MN 55008.

## **SISTER CITIES COMMISSION**

The purpose of the Sister City Commission is to promote long-lasting, mutual goodwill and understanding between the City of Cambridge and its sister cities of Beli Manastir in Croatia, Rattvik in Sweden, and Yuasa in Japan. Typically meets bi-monthly in the City Council Chambers at 300 3rd Ave NE, Cambridge, MN 55008.

## **ARE YOU INTERESTED GETTING INVOLVED?**

**Look for vacancies at**

**[www.ci.cambridge.mn.us/your-government/employment](http://www.ci.cambridge.mn.us/your-government/employment)**

# COMMUNITY DEVELOPMENT

Cambridge's Community Development Department consists of:

- Planning and Zoning
- Building
- Code Compliance

The **Planning and Zoning** division of Community Development provides long range planning services and reviews land use plans for consistency with city codes. The division also drafts policies and revises ordinances to implement the goals for the City Council regarding growth management and development practices. They oversee zoning regulation of properties to ensure the general health, safety, and welfare standards for the community are met. They assist residents and applicants with zoning requests, development requests and flood plain information. This division reviews applications for Conditional Use Permits, Variances, Rezoning, Annexation, Lot Splits, Platting and Sign Permits.

**Building permits** are needed for anyone wishing to erect, construct, enlarge, alter, repair, move, improve, remove, convert, or demolish any structure or any part of your home. Permit applications are available on the City website. Simply download the appropriate permit application, or try our online permit submissions. Typical turnaround for plan review is 2 weeks, so please plan accordingly.

**City Codes, or Ordinances**, are established standards for maintenance, outdoor storage, vehicle and RV parking, and other activities that may impact property values or quality of life.

- Snow and ice must be removed from sidewalks by the owner or tenant of the abutting property within 24 hours after snowfall.
- Weeds, grasses and other rank vegetation of 12 inches or taller must be removed. Abatement by the City may occur if the grass is not cut.
- When cutting grass, it cannot be put onto the road as it is bad for our waterways and motorists.
- Vehicles must be parked on a hard surface such as concrete or asphalt.

# ECONOMIC DEVELOPMENT

Cambridge is Minnesota's Opportunity Community. Our location, 45 miles North of Minneapolis on HWY 65 and HWY 95, is well-suited to serving businesses, commuters and suppliers alike.



Cambridge is considered the East Central Minnesota Regional hub for shopping and is the Isanti County Seat. The City hosts Allina Regional Medical Center and Anoka-Ramsey Community College in addition to high-tech manufacturers. The Municipal Airport is also located just at the Western edge of Cambridge.

Our community is ideal for manufacturers looking for high quality “shovel-ready” industrial parks, with excellent services and a stable workforce to back it up. Convenient for medical device firms desiring to tap into the region’s growing workforce, biomedical training opportunities and other available incentives.

Distribution centers find easy access to the North Metro, Duluth, Saint Cloud and Western Wisconsin without the Metro area congestion. Cambridge is also suitable for professional services and back-office firms needing skilled labor, conductivity and a rapidly growing area. Cambridge has large contiguous parcels of drying, build-able land.



Available development sites in two Industrial Parks, one Business Park, retail, commercial, and redevelopment are options with incentives for qualified business development opportunities.



Cambridge quality of living standards are exceptionally high. The City possesses 18 parks, Richard G. Hardy Performing Arts Center, a regional sports complex, public services, quality education, customized training and a solid workforce with a strong work ethic. All of these attributes and more make Cambridge a great place for your business and family.

**VISIT THE CITY OF CAMBRIDGE'S WEBSITE AT  
[WWW.CI.CAMBRIDGE.MN.US](http://WWW.CI.CAMBRIDGE.MN.US)**

Pay utility bills

Apply for building permits

Find maps of the parks or city

Meeting and event info

Summer Programming Events

City News

Community Garden Info

Reserve Park Facilities

Get updates about street projects

Municipal Airport

View City Codes

Business Incentives and Grants!

Rental Registration info

Tons of other resources!

# PUBLIC SAFETY

## FIRE DEPARTMENT

The Cambridge Fire Department has up to 30 paid, on-call members and 1 Full time Deputy Chief who are committed to providing service, education, Fire Prevention, and creating a safe atmosphere that promotes the health and wellness of the community.

**The Fire Department responds when dispatched by 911.**

## POLICE DEPARTMENT

The Cambridge Police Department has 16 full-time and two part-time officers committed to providing quality service, reduction of crime and reduced fear of crime in our community.

We provide services in patrol, investigations, crime prevention, school resource, animal control, records administration, and police support.

**The Police Department responds when dispatched by 911, or by their non-emergency number 763-689-9567.**

## NEIGHBORHOOD WATCH PROGRAM

When neighbors take responsibility to maintain cohesion, the neighborhood is more likely to identify and report crimes. Neighborhood watch programs are often created after suspicious activity has occurred, but it is beneficial to start organizing proactively.

**Contact Sergeant Shawn Machin at 763-689-9567 to start a Neighborhood Watch.**

**Our Fire and Police Departments engage with the Community regularly through Fire Prevention, Education, Open Houses, Benefits, and much more.**



# PUBLIC TRANSPORTATION

Arrowhead Transit services the City of Cambridge and throughout Isanti and surrounding counties.

Schedule rides by calling 800.862.0175, option 12 at least one hour in advance.



- The **Downtown** Area
- The **Service** Area, covering Anoka-Ramsey CC, Allina Hospital, and Isanti County Government Center
- The **Residential & Retail** Area, covering Wal-Mart, Menards, Target, and Cub Foods
- **Loop Routes** between Cambridge and Isanti, Braham, or North Branch are also available.

The Bus operates **MONDAY-SATURDAY** from **7AM to 5PM** and **SUNDAY** from **7AM to 1PM**.

**Arrowhead Transit Toll Free: 800.862.0175**

# EMERGENCY NOTIFICATIONS

If an emergency happens within the City, information will be posted on the City's website's home page ([www.ci.cambridge.mn.us](http://www.ci.cambridge.mn.us)). Messages will also be posted on the City's Facebook page (@cityofcambridgeminnesota).

If it is a large-scale emergency, Isanti County Dispatch may send out emergency notifications by using a reverse 911 system to call your home phone. If you do not have a home phone number, you should register your cell phone number with the Isanti County Sheriff's Department.

# RESOURCES & BUSINESSES

## CAMBRIDGE MUNICIPAL AIRPORT

There are sites available for private hangars and planned commercial sites are ready for development.

Call 763.689.1800 for info on hangar leases.

Visit [ci.cambridge.mn.us](http://ci.cambridge.mn.us) for available industrial buildings & land.

## CAMBRIDGE MEDICAL CENTER

Cambridge Medical Center is a regional facility providing quality clinic and hospital services to residents in East Central Minnesota, including Isanti County for over 50 years.



The Level IV trauma emergency department is staffed 24/7 by Physicians specializing in emergency care. Nearly 11,000 patients are seen in the ER annually.

A same-day clinic, retail pharmacy and eye care center are also located at the facility.

New facilities are anticipated to open in 2025! New facilities include state-of-the-art hospital and clinic, featuring inpatient beds, an Emergency Department, operating rooms and expanded outpatient services.

### Allina Hospitals & Clinics

701 Dellwood St S

763.689.7700

[www.allinahealth.org/cambridge-medical-center](http://www.allinahealth.org/cambridge-medical-center)





[www.c-ischools.org](http://www.c-ischools.org)

## **Cambridge Primary School**

Grades K-2  
310 Elm St N, Cambridge  
763.691.6500

## **Cambridge Intermediate School**

Grades 3-5  
428 2nd Ave NW, Cambridge  
763.691.6600

## **Cambridge Middle School**

Grades 6-8  
31374 Xylite St NE, Cambridge  
763.552.6300

## **Cambridge-Isanti High School**

Grades 9-12  
430 8th Ave NW, Cambridge  
763.689.6066

## **Woodland Campus**

1700 305th Ave NE, Isanti  
- Riverside Academy  
- Brookside Academy  
- Moving Forward  
763.552.6250

## **Early Childhood Family Education**

428 2nd Ave NW  
763.691.6691

## **Isanti Primary School**

Grades K-2  
301 Heritage Blvd NW, Isanti  
763.691.8778

## **Isanti Intermediate School**

Grades 3-5  
101 9th Ave NE, Isanti  
763.552.8800

## **Isanti Middle School**

Grades 6-8  
201 Centennial Dr, Isanti  
763.691.8600

## **C-I STEAM School**

101 9th Ave NE, Isanti  
763.552.8800

## **Cambridge-Isanti Online Schools**

625A Main St N, Cambridge  
763.689.6188

## **ADDITIONAL SCHOOLS**

### **Art and Science Academy, K-4**

1005 6<sup>th</sup> Ave Ct NE, Isanti  
763.444.0342

### **Cambridge Christian School, K-12**

2211 Old Main St S  
763.689.3806

### **Art and Science Academy, 5-8**

1005 7<sup>th</sup> Ave NE, Isanti  
763.444.0039

### **Anoka Ramsey Community College**

300 Spirit River Dr S  
763.689.700

# SENIOR LIVING

## East Terrace Cooperative

2155 6<sup>th</sup> Lane SE

763.552.0709

[www.eastterracecooperative.com](http://www.eastterracecooperative.com)



## GracePointe Crossing 1545

River Hills Pkwy NW

651.631.6100

[www.preshomes.org/our-communities/gracepointe-crossing](http://www.preshomes.org/our-communities/gracepointe-crossing)



## Mill Ridge Terrace

235 Fern Street North

763.689.1474

[www.preshomes.org/our-communities/mill-ridge-terrace](http://www.preshomes.org/our-communities/mill-ridge-terrace)



## Riverwood Village of Cambridge

909 South Dellwood Street

763.645.1550

[www.avinityseniorliving.org/communities/Riverwood-Village](http://www.avinityseniorliving.org/communities/Riverwood-Village)



## Roosevelt Garden Estates

1900 10<sup>th</sup> Ave SE

763.645.1222

[www.inhproperties.com/property/roosevelt-garden-estates](http://www.inhproperties.com/property/roosevelt-garden-estates)



### Rosewood Senior Living

801 Main St N  
763.552.1340  
[www.rosewoodsl.net](http://www.rosewoodsl.net)



### Walker Methodist Levande

2011 6th Lane SE  
763.325.0100  
[www.walkermethodist.org/assisted-living-communities/levande](http://www.walkermethodist.org/assisted-living-communities/levande)



## SENIOR ENRICHMENT CENTER

### SAC's (Senior Enrichment Center)

140 Buchanan St N (in City Center Mall)  
763.689.6555  
[www.cambridgesac.org](http://www.cambridgesac.org)

SAC's is a gathering center for seniors dedicated to providing seniors with informational, nutritional, recreational, and health resources and support.



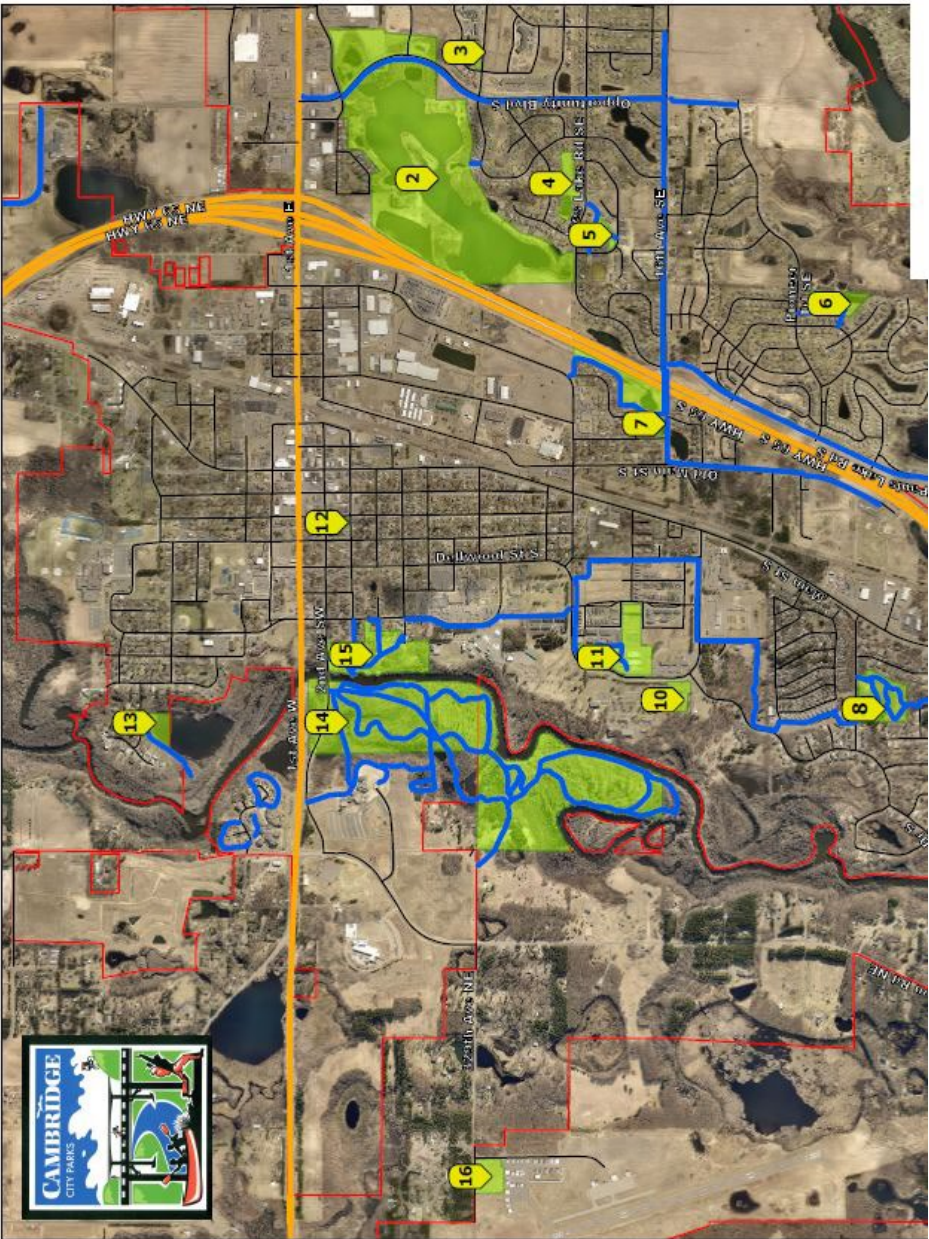
### SAC's Friendship Cafe

140 Buchanan St N (in City Center Mall)  
763.689.6555

Homemade soups, baked goods, salads, lunch specials, and more for \$8.00 or less. The Cafe is open to the public of all ages!



# PARKS



For park reservations or questions,  
please call 763.552.3230





Trails and Paths  
 Park and Recreation Areas  
 Municipal Boundary

1. Sandquist Park (34262 Naples Rd NW)
2. Joe's Lake Natural Preserve (9500 Joe's Lake Rd SE)
3. Parkwood Park (1920 8th Ln SE)
4. Silver Oak Park (1280 Joe's Lake Rd SE)
5. Honeysuckle Park (1100 Honeysuckle Ln S)
6. Pioneer Park (821 Pioneer Trail SE)
7. Peterson Park (310 16th Ave SE)
8. Brown Park (905 24th Ave SW)
9. Woodhaven Acres (3495 S Maple Dr)
10. Community Garden / Dog Park (1821 East Rum River Dr S)
11. Central Green (1455 Fem St S)
12. Watertower Park (255 Birch St S)
13. Wood Duck Preserve (935 6th Ave NW)
14. Spirit River Nature Area (1055 2nd Ave SW)
15. City Park (810 2nd Ave SW)
16. Lorne Erickson Memorial Park (905 Airport Road)



Have you checked out our parks lately?

## Park Information

Everyday fitness is important for well-being. Adding physical activity to daily routines can be enjoyed throughout the city. City trails, parks and walking loops are maintained throughout the City.

## Park Activities

Our parks offer a variety of options to help you stay active year-round, including:

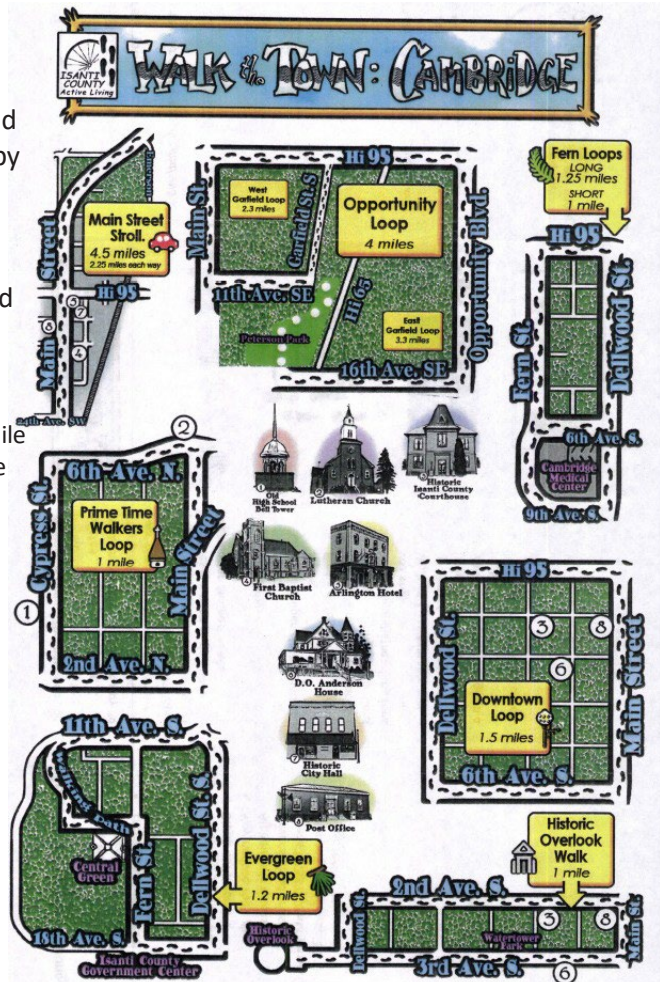
- Baseball
- Cross-Country Skiing at Spirit River Nature Area
- Ice Skating
- Sledding
- Tennis
- Basketball
- Bankshot (basketball-like game)
- Disc Golf at Cambridge City Park
- Pickleball
- Softball
- Concerts
- Kid's programs and events

## Walking Routes

Cambridge has five marked walking routes dedicated by the former Isanti County Active Living Group.

Look for these signs around Cambridge:

- Downtown, 1.5 miles
- Prime Time Walkers, 1 mile
- Historic Overlook, 1 mile
- Opportunity, 4 miles
- Fern, 1.25 miles
- Evergreen, 1.2 miles
- Main Street, 4.5 miles



# UTILITIES & GARBAGE

## Water & Sewer

Utility Bills are distributed monthly and include water, sewer, storm sewer & street light utility fee. Bills can be paid online via our website, or sign up for automatic bill pay to save you and the city money in online payment fees.

763.552.3212 | [www.ci.cambridge.mn.us/utilities](http://www.ci.cambridge.mn.us/utilities) (Register or Pay Online)

## Gas

CenterPoint Energy  
612.372.4727

## Phone/Internet/Cable

Midcontinent Communications  
800.888.1300

## Electric

East Central Energy  
800.254.7944

## Century Link

763.689.2814

## Connexus Energy

763.323.2600

## Brush & Tree Disposal

Open to all residents of Isanti County. Stumps, Grass Clippings, Leaves, No Trash.

Cambridge Transfer Station

4194 HWY 95 NE

763.689.4056

## Residential Refuse

**The City of Cambridge has organized collection and contracts with specific haulers for Cambridge residents and businesses. These contracts start January 1, 2020 and run through December 31, 2024.**

LePage and Sons 763.757.7100

Waste Management 866.230.1547

Refuse, recycling, and yard waste pick up is available from these haulers.

For Properties: All waste material, debris, refuse, recycling and garbage must be kept in an enclosed building or closed containers. No dumpsters are allowed on any City Street.

## Commercial Refuse

Ace Sanitation 763.242.0579

LePage & Sons 763.757.7100

Waste Management 866.230.1547

# NORTHBOUND LIQUOR



## Cambridge Municipal Liquor Store

Northbound supports the City’s Park Development, Downtown Enhancements, Ice Rink Facility, Pickleball Courts, and so much more.

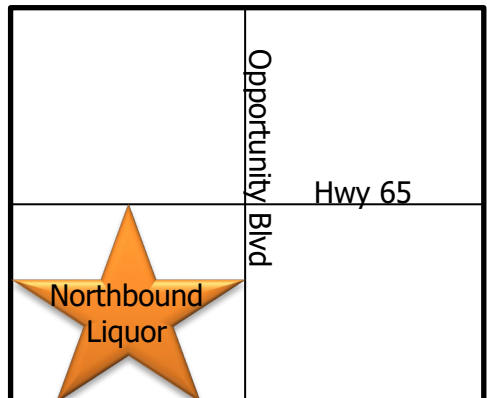
Be sure to check the incredible Monthly Specials on the City Website and Facebook page.

### Location

1655 East First Ave  
 (HWY 95 & Opportunity Blvd)  
 763.689.2468

### Hours

Mon-Thurs: 9AM - 9PM  
 Fri & Sat: 9AM - 9PM  
 Sunday: 11AM - 5PM



## **Wine Market**

Northbound features a special wine section with over 1,400 wines, including a section dedicated to Minnesota-made wines, making it a great place to stop for gifts or on the way to a dinner party.

## **Craft and Domestic Beer**

Northbound boasts over 800 beer varieties to choose from and 1,100 liquors; there's always an in-store special.

Being locally-owned and operated, you'll find a welcoming environment and hand-painted wine glasses or custom-designed gift baskets wrapped and ready for pick-up on your way to an event.

## **Tuesdays**

Military and Senior Citizen discount.



Northbound offers over 1,400 wine varieties, 800 beer options and 1,100 different liquors.

# DRIVER AND VEHICLE SERVICES

## Driver's License or Renewed License

Isanti County Government Center &  
County Auditor's Office  
555 18th Ave SW  
763.689.1644

## Driver's License Exam Station

140 Buchanan St. N  
(In City Center Mall)  
763.689.7078

## License Tabs and Vehicle Registration

Isanti County Deputy Registrar  
225 Ashland St S  
763.689.1130

# CAMBRIDGE PUBLIC LIBRARY

## Location

111 Dellwood St. N.

## Hours

Mon - Thurs:	9AM – 8PM
Fri:	9AM – 6PM
Sat:	9AM – 4PM
Sunday:	Closed



# HELPFUL WEBSITES

City of Cambridge - [www.ci.cambridge.mn.us](http://www.ci.cambridge.mn.us)

Allina Medical - [www.allinahealth.org/cambridge-medical-center](http://www.allinahealth.org/cambridge-medical-center)

School District - [www.c-ischools.org](http://www.c-ischools.org)

Waste Management - [www.wm.com](http://www.wm.com)

Cambridge-Isanti Community Education - [www.c-ischools.ce.eleyo.com](http://www.c-ischools.ce.eleyo.com)

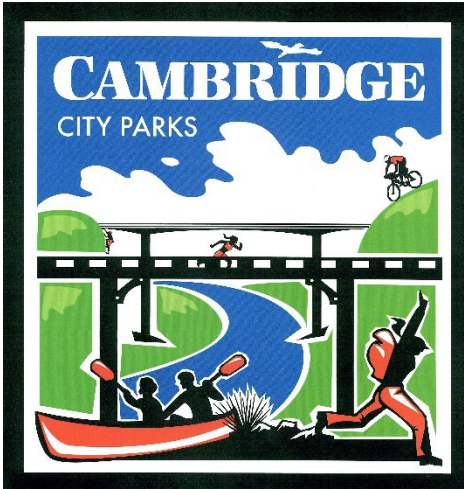
Senior Enrichment Center - [www.sacsmn.org](http://www.sacsmn.org)

Voting Info - [www.ci.cambridge.mn.us/vote](http://www.ci.cambridge.mn.us/vote)

Cambridge Cab - [www.cambridge-cab.com](http://www.cambridge-cab.com)

Isanti-Chisago County Star – [www.isanti-chisagocountystar.com](http://www.isanti-chisagocountystar.com)

# SUMMER PARKS PROGRAMMING



Find fun, free activities and events that are scheduled throughout the summer months by the City of Cambridge on our city website or on our Facebook Page.

There are events for the whole family!

We offer a **concert series** at our Amphitheater at Cambridge City Park. The concerts may range from pop, to rock, to family fun!

We also provide a concert series for the **Discover Downtown** events on the Third Thursdays of the summer months.

We've provided a variety of **kid's events** in the past, including magic shows, kids' concerts, petting zoos, bounce houses, and art projects. These are fun events that are hosted in our city park, so there is something for everyone.



**Follow us on Facebook to stay up to date on all events!**

## QUICK REFERENCE GUIDE

**City Hall**

300 3rd Ave NE  
763.689.3211

**Fire Department**

300 3rd Ave NE  
763.552.3270

**EMERGENCY DIAL 911**

**Cambridge Post Office**

209 Main St S  
763.689.2820

**Isanti County  
Government  
Center**

555 18th Ave SE  
763.689.3859

**Community Education**

625 B Main St N  
c-ischools.ce.eleyo.com  
763.689.6189

**Isanti County Historical Society**

33525 Flanders St NE  
763.689.4229

**Allina Hospital**

701 S Dellwood St S  
763.689.7700

**Police Department**

300 3rd Ave NE  
763.689.9567  
**EMERGENCY DIAL 911**

**Public Works**

800 7th Ave SW  
763.689.1800

**East Central Regional Library**

111 Dellwood St N  
763.689.7390

**Chamber of Commerce**

140 Buchanan St N  
763.689.2505