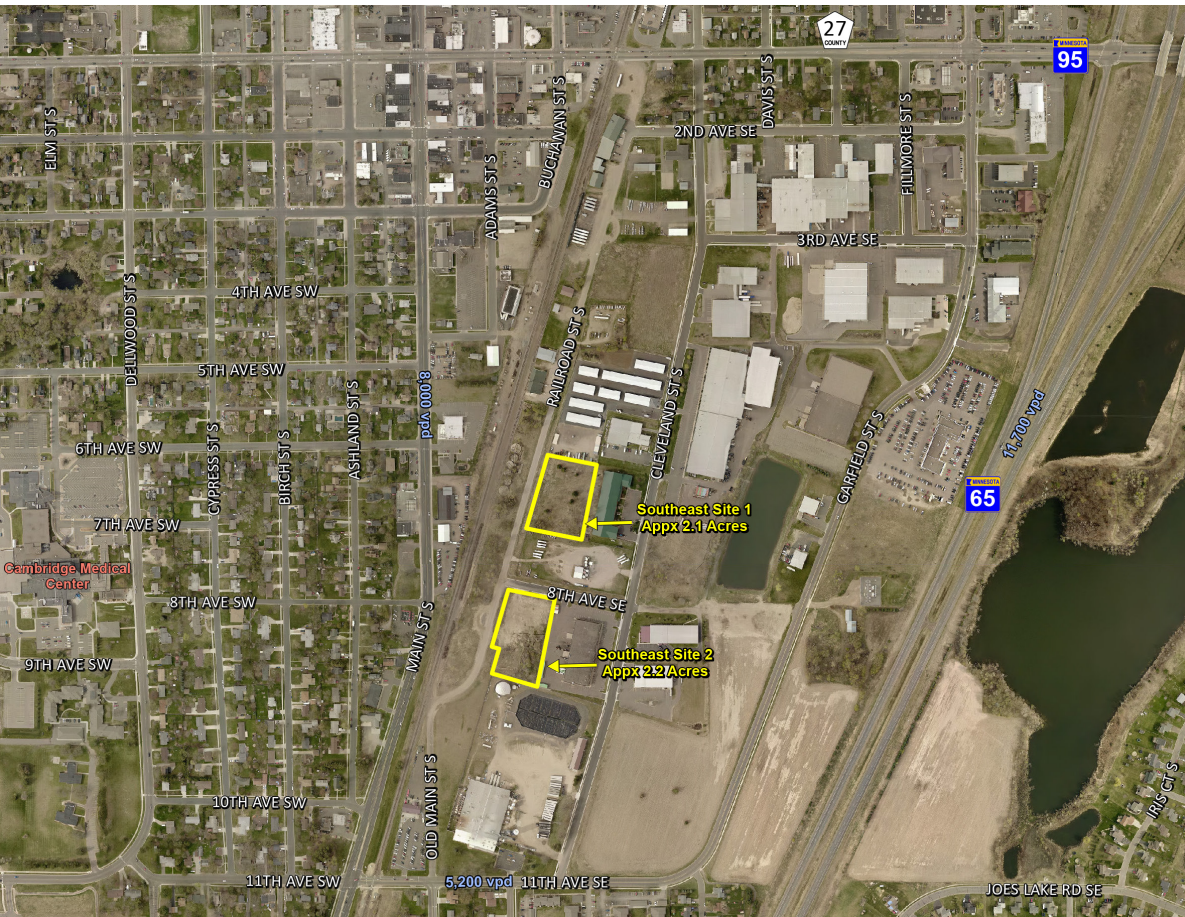


Cleveland Street South Southeast Industrial Park

\$1.50 Per Square Foot

**LOCATED IN
A QUALIFIED
OPPORTUNITY
ZONE.**



Cambridge Southeast Industrial Park is located in a Qualified Opportunity Zone.

The Light Industrial District is intended to allow light industrial uses that are free from objectionable features, or whose objectionable features are limited and can be eliminated by design, screening, and other appropriate devices.

CITY OF
CAMBRIDGE
MINNESOTA

Cambridge Economic Development

Your First Stop for Business Locations, Financing Resources and Development Opportunities.

Stan Gustafson, Economic Development Director

sgustafson@ci.cambridge.mn.us | www.opportunitycommunity.com

763.552.3209

SOUTHEAST INDUSTRIAL PARK

4.25 Acres Available, City-owned, 10 ton roads, 50 minutes from Minneapolis, Regional stormwater Detention Pond and Utilities Available.

Demographics	1 Miles	3 Miles	5 Miles
Population	3,617	11,243	14,159
Median HH Income	\$43,417	\$54,171	\$55,939
Average HH Income	\$60,468	\$75,530	\$76,165